

Comparison of C-reactive Protein and Albumin Excretion as Prognostic Markers for 10-Year Mortality After Myocardial Infarction

Giuseppe Berton, MD, FESC; Rocco Cordiano, MD; Rosa Palmieri, MD; Fiorella Cavuto, MD; Patrizio Buttazzi, PhD; Paolo Palatini, MD

Department of Cardiology (Berton, Buttazzi), Conegliano General Hospital, Conegliano, Italy; Department of Internal Medicine and Cardiology (Cordiano, Palmieri), Adria General Hospital, Adria, Italy; Department of Cardiology (Cavuto), Bassano General Hospital, Bassano del Grappa, Italy; Department of Clinical and Experimental Medicine (Palatini), University of Padova, Padova, Italy

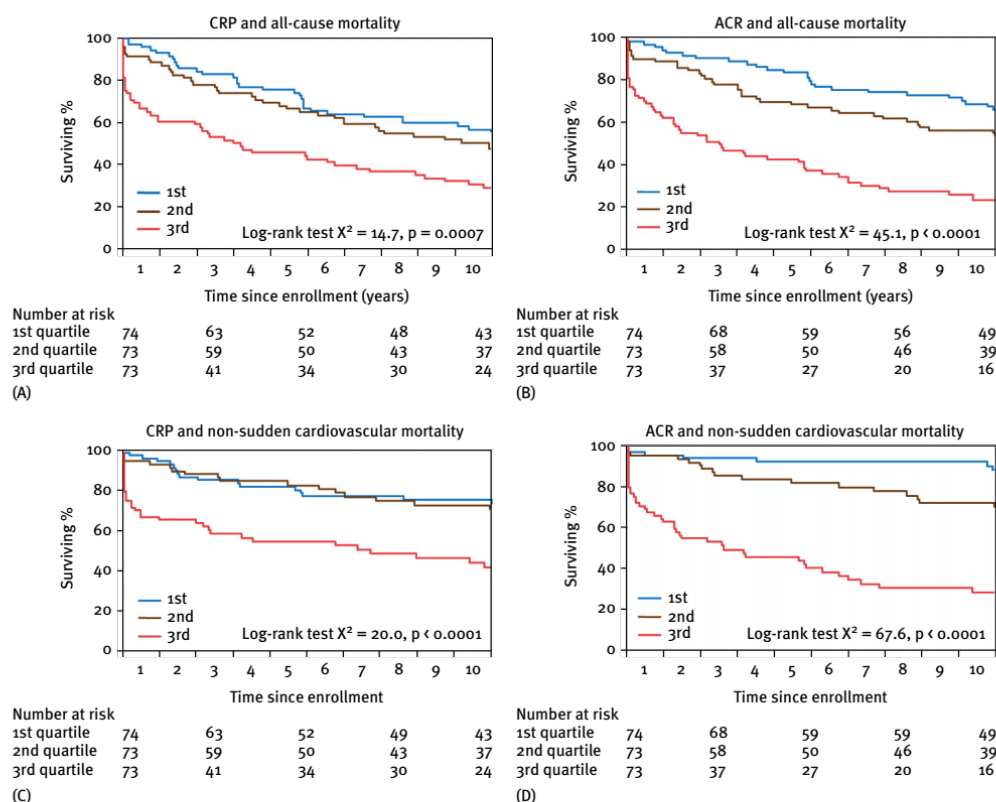


Figure 1. Kaplan-Meier estimates of the probability of all-cause and non-sudden cardiovascular mortality in the patients stratified by tertiles of C-reactive protein (CRP) and albumin-to-creatinine ratio (ACR).