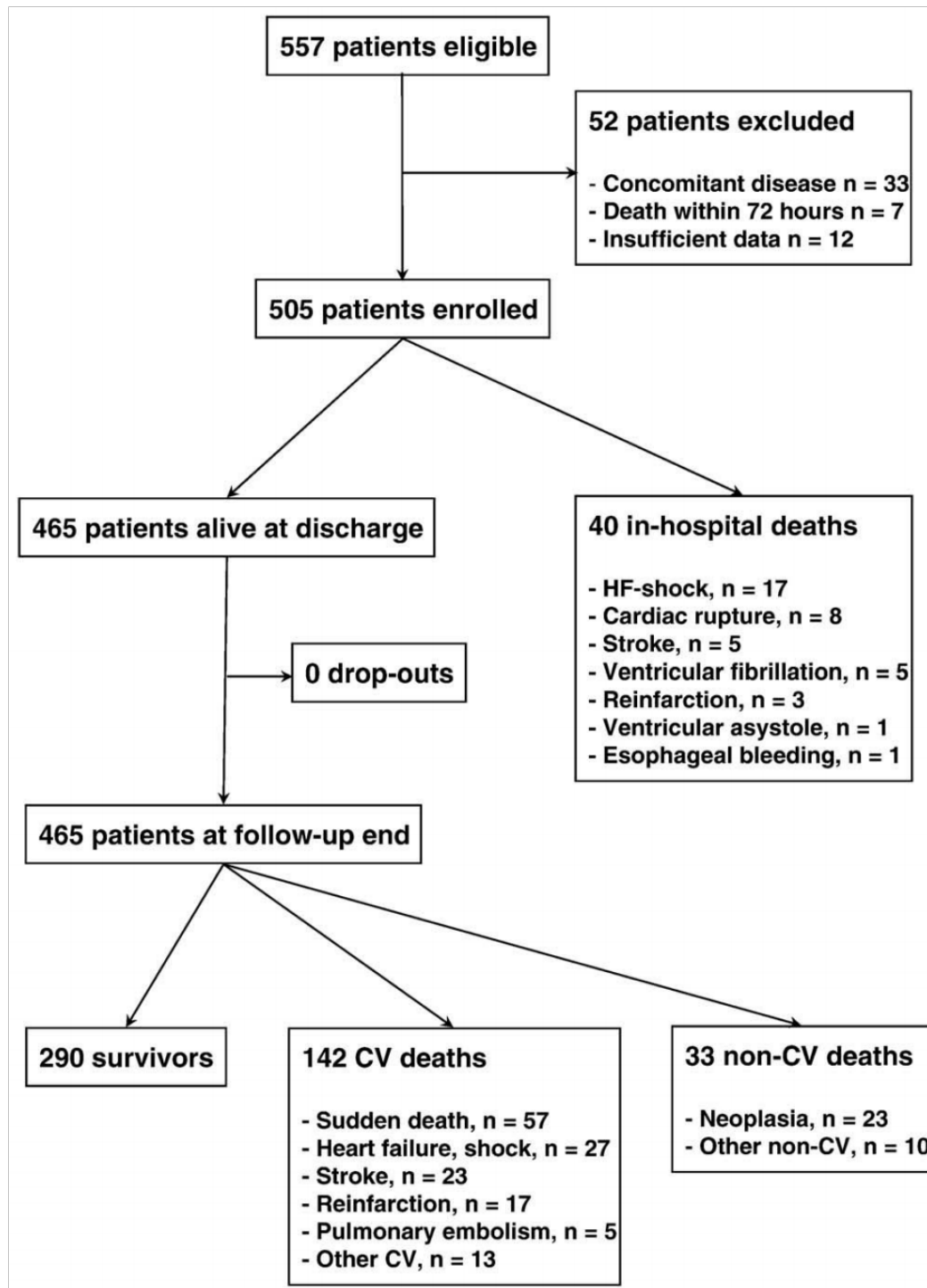


Albumin excretion in acute myocardial infarction: A guide for long-term prognosis

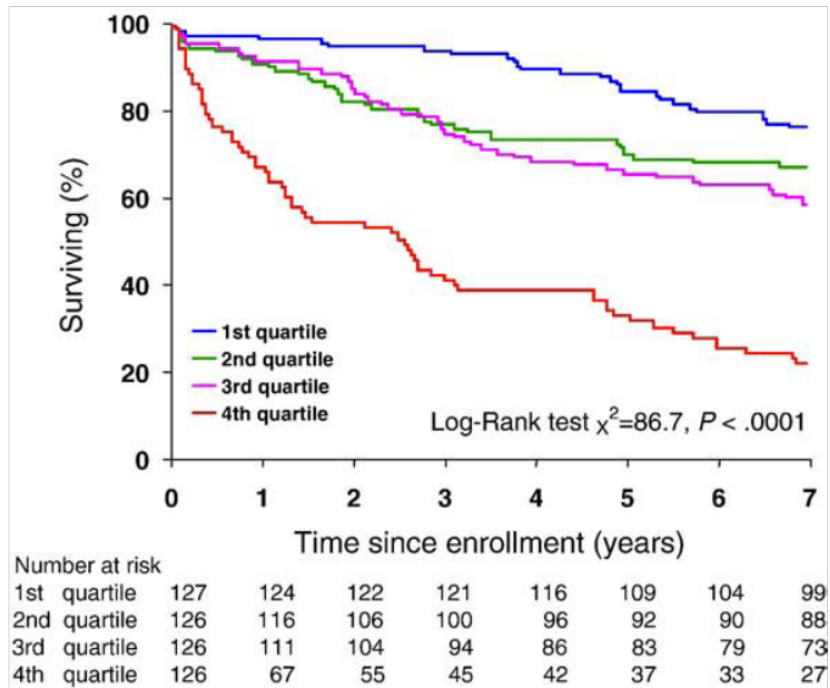
Giuseppe Berton, MD, FESC,^a Rocco Cordiano, MD,^b Stefano Mazzuco, PhD,^c Ethan Katz, MD,^d Renzo De Toni, PhD,^e and Paolo Palatini, MD^e *Conegliano, Adria, and Padova, Italy; and Cleveland, OH*

Figure 1



Flow diagram of subject progress during long-term follow-up. HF, Heart failure; CV, cardiovascular.

Figure 2



Kaplan-Meier estimates of the probability of nonearly all-cause mortality in the patients stratified by quartiles of ACR on the third day after admission. Patients who died in-hospital (early mortality) were censored at the day of death. For values of ACR in each quartile, see [Table I](#).