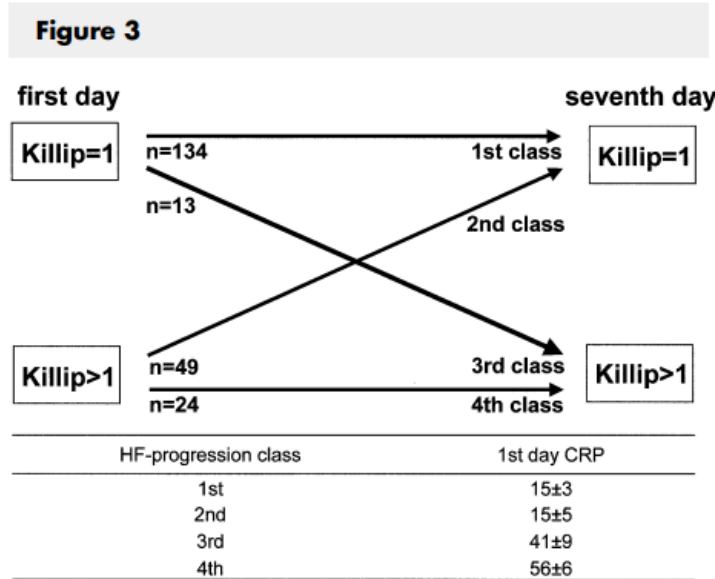
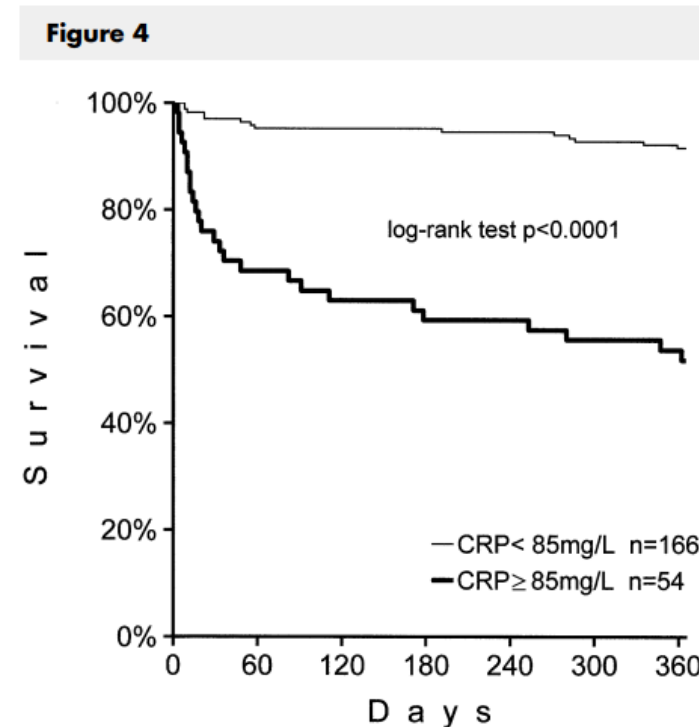


# C-Reactive protein in acute myocardial infarction: Association with heart failure

Giuseppe Berton, MD, FESC,<sup>a</sup> Rocco Cordiano, MD,<sup>b</sup> Rosa Palmieri, MD,<sup>b</sup> Sigismondo Pianca, MD,<sup>a</sup> Valeria Pagliara, MD,<sup>a</sup> and Paolo Palatini, MD<sup>c</sup> *Padua, Italy*



Time-course of HF during the week of hospital stay and CRP measured on the first day of hospitalization in 220 patients with AMI divided into 4 classes of HF progression during the week following admission to hospital (see Methods for explanation).



Kaplan-Meier estimates of the probability of 1-year all-cause mortality in the patients stratified by CRP  $\geq 85$ mg/L or  $< 85$ mg/L measured on the third day after admission ( $P < .0001$  for log-rank test).