

Predictors of Ten-Year Event-Free Survival in Patients With Acute Myocardial Infarction (from the Adria, Bassano, Conegliano, and Padova Hospitals [ABC] Study on Myocardial Infarction)

Giuseppe Berton, MD^{a,*}, Rocco Cordiano, MD^b, Fiorella Cavuto, MD^c, Giulia Giacomini, PhD^a, Renzo De Toni, PhD^d, and Paolo Palatini, MD^d

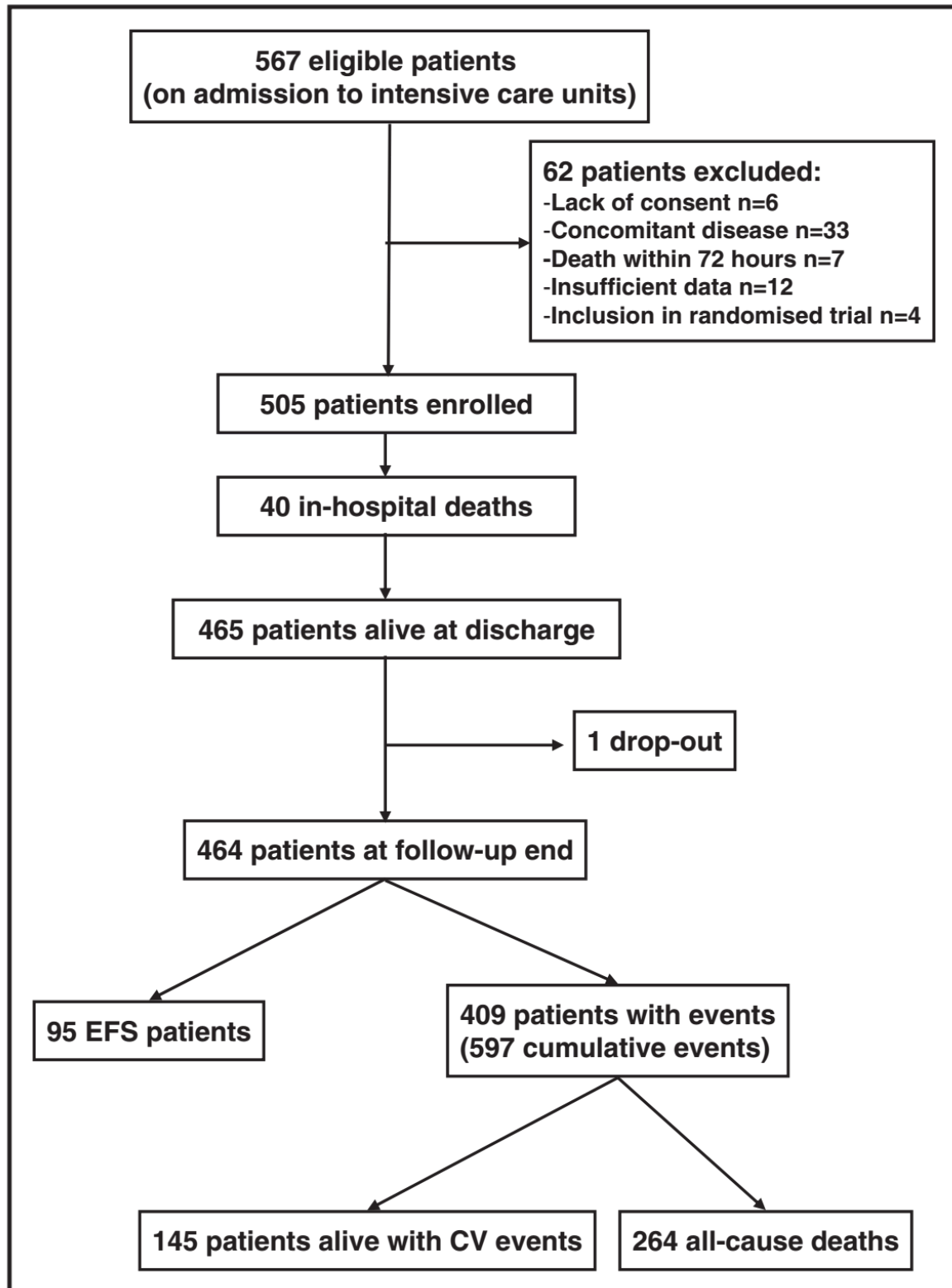


Figure 1. Flow diagram of subject progress during follow-up.

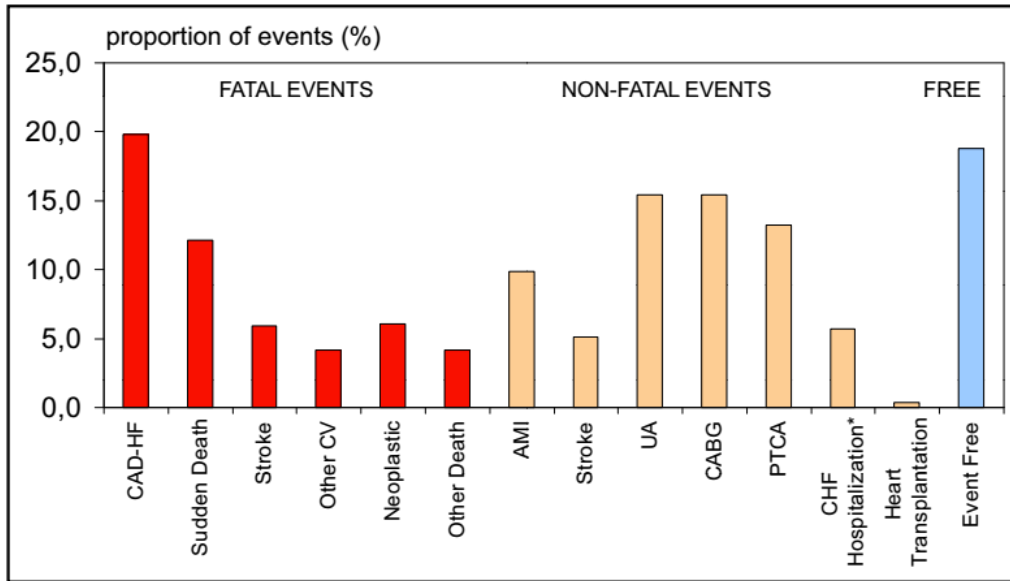


Figure 2. Adverse events occurred in 504 patients during 10 years of follow-up after AMI. *In absence of other CV events. ACR = albumin/creatinine ratio; AMI = acute myocardial infarction; CABG = coronary artery bypass grafting; CAD-HF = coronary artery disease–heart failure; CHF = congestive heart failure; PTCA = percutaneous transluminal coronary angioplasty; UA = unstable angina.